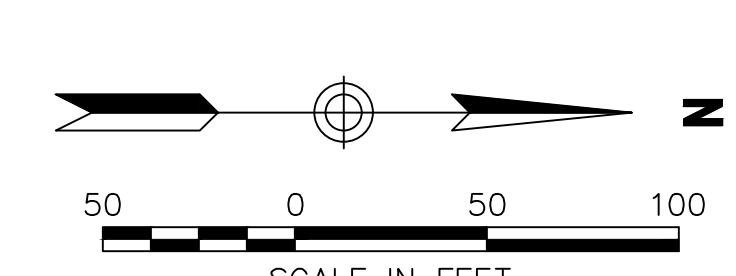


See Sheet PL2.03

See Sheet PL2.03

See Sheet PL2.06

See Sheet PL2.06

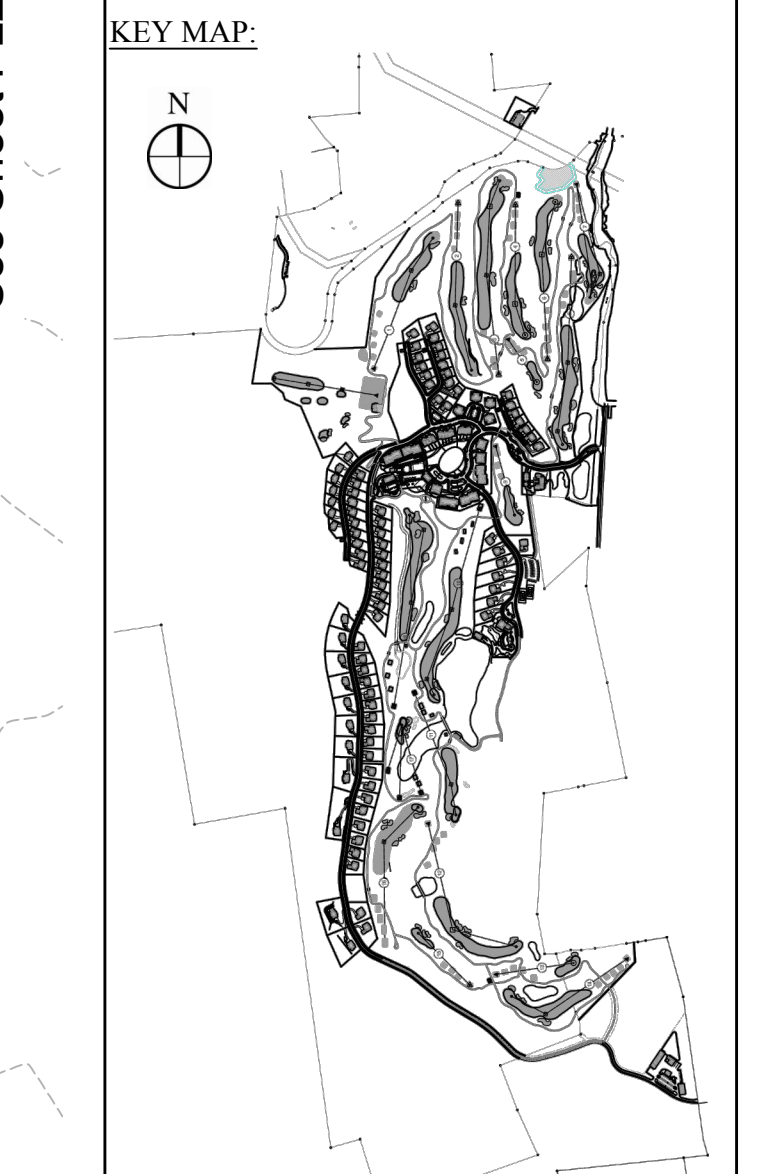


OWNER:
Silo Ridge Ventures Property A, LLC
5021 Route 44
Amenia, New York 12501
845.373.8020

ENVIRONMENTAL PLANNING & CIVIL ENGINEERING:

VHB
Engineering, Surveying & Landscape Architecture, P.C.
Planning
Transportation
Land Development
Environmental Services
50 Main Street, Suite 360
White Plains, New York 10606
914.467.6600 • FAX 914.761.3759

PROJECT SURVEYOR:
Kirk K. Horton, Land Surveyor
NYS License No. 049954
9 Broadway
Amenia, New York 12501
845.373.7809



Rev.	Revision	Date	By	App'd
1	As Shown	January 8, 2015	MB	ACC

Silo Ridge Field Club
4651 Route 22, Town of Amenia
Dutchess County, New York

Preliminary Subdivision Plat

Not Issued for Construction

Preliminary Subdivision Plat 4

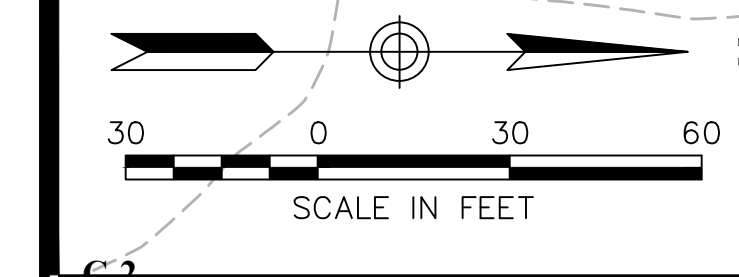
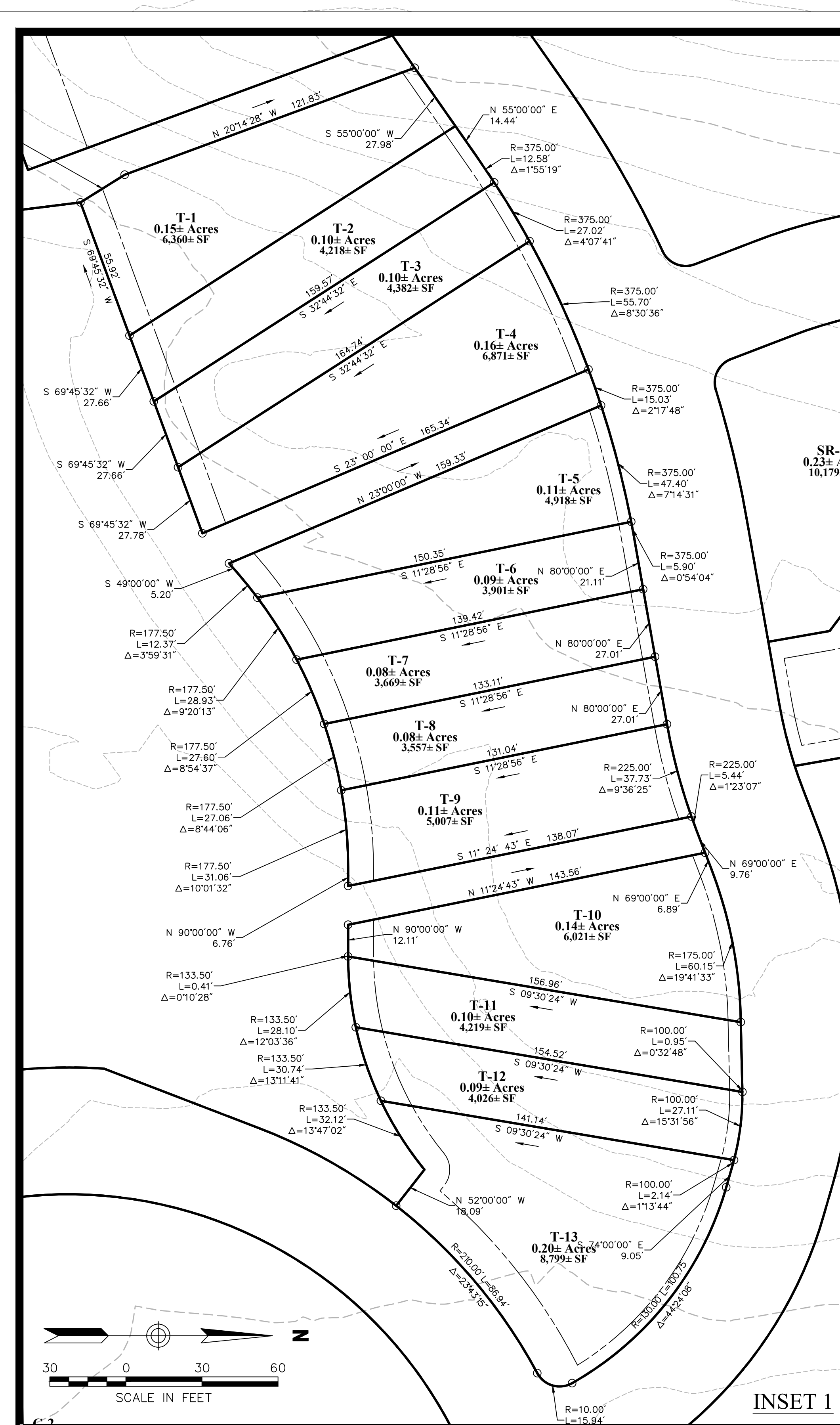
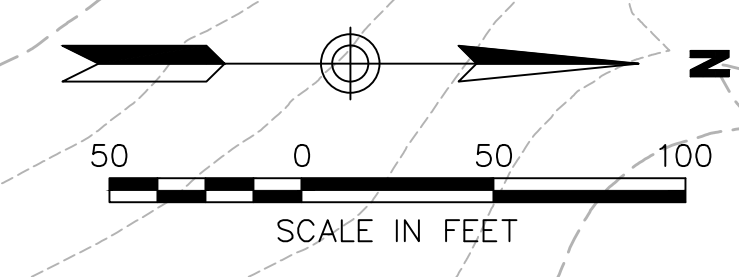
Sheet of
PL2.04
Project Number
29011.00



See Sheet PL2.04

See Sheet PL2.07

See Sheet PL2.07

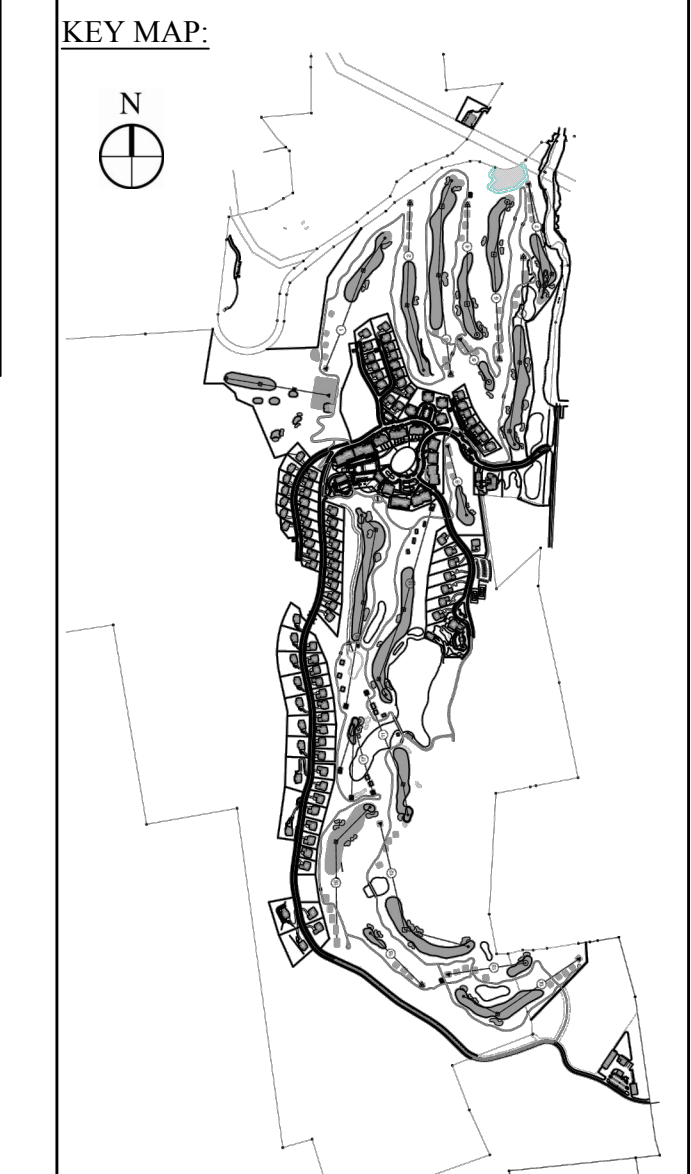


OWNER:
Silo Ridge Ventures Property A, LLC
5021 Route 44
Amenia, New York 12501
845.373.8020

ENVIRONMENTAL PLANNING & CIVIL ENGINEERING:

VHB
Engineering, Surveying & Landscape Architecture, P.C.
Planning
Transportation
Land Development
Environmental Services
50 Main Street, Suite 360
White Plains, New York 10606
914.467.6600 • FAX 914.761.3759

PROJECT SURVEYOR:
Kirk K. Horton, Land Surveyor
NYS License No. 049954
9 Broadway
Amenia, New York 12501
845.373.7809



Rev.	Description	Date
1	As Shown	January 8, 2015

Silo Ridge Field Club
4651 Route 22, Town of Amenia
Dutchess County, New York

Preliminary Subdivision Plat

Not Issued for Construction

Preliminary Subdivision Plat 6

Sheet of
Project Number
PL2.06
29011.00

